

THE OXHILL NEWS

July 2021 No. 560



Hawthorn Tree in Blossom in front of St Lawrence Church. Photo by Grenville Moore

Vanessa Druce, editor & Grenville Moore, consulting editor
Email: oxhill@btinternet.com Website: oxhillcommunity.co.uk



TABLE OF CONTENTS

| ARTICLE | PAGE |
|--|------|
| Quis Who! | 3 |
| Reg Gethin Leaving the Village | 4 |
| Village Hall BBQ Party | 5 |
| The Oxhill Laaaaadieees Walk Again | 6 |
| Tysoe Tennis Club | 8 |
| Warwickshire Open Studios Art Exhibition | 9 |
| St Lawrence Church | 10 |
| Oxhill Garden Club Party | 11 |
| Nature Notes | 12 |
| Oxhill Cooks | 14 |
| Swan Singers | 15 |
| The Way We Were | 16 |
| Dog Barking | 16 |
| Babysitter Available | 17 |
| TWAM -Tools With a Mission | 18 |
| Nature Garden Photo | 18 |
| Carer4Carers | 19 |
| Tysoe W.I. | 19 |
| Wot2Grow Community Orchard | 20 |
| Oxhill Community Website | 21 |
| Colour by Numbers | 22 |

CLUB & GROUP CONTACT DETAILS

| | |
|------------------------------|---|
| Carers4carers: | kcarers4carers@gmail.com or tel: 07947 893504 |
| Oxhill Village Hall: | Jo Collings - Chair - 01295 680215 Ali Sayer - Hall Hire - 01295 680451 email: village-hall@oxhill.org.uk |
| The Peacock Pub | 01295 688060 |
| Tysoe Tennis Club: | Club Secretary: Carol Spencer email: carol.spencer234@hotmail.co.uk |
| Warwickshire Mobile Library: | 01926 851031 |
| WOT2Grow Community Orchard: | Liz Atkinson (680045), Paul Sayer (680451), Sue & Mike Sanderson (688080) www.wot2grow.co.uk |

**If you would like to list your club or group in the Oxhill News
please send details to oxhill@btinternet.com**

GUESS WHO!



Did you guess the villagers in last month's Guess Who?

The top photo was the wedding of **Reg and Angela Gethin** on 12 March 1959. They married in Somerset, Bermuda and Reg wrote about riding in the carriage: "The strong wind meant that the canopy had to stay down & the bride's headdress was a hundred yards 'dahh de rode'."

Reg and Angela lived in the village for 52 years. Sadly Angela passed away in November 2020 and now Reg is leaving the village to move to Wales. We will miss his friendly smile, easy conversation and expert plant knowledge. We wish him the best of times in his new home and feel confident that wherever Reg goes he will find warm and welcoming companionship.

The second photo is last month's Guess Who! was a painting of our editor, **Vanessa Druce**, as a young woman in her early twenties.

Do you know who the villagers are in this month's Guess Who?

LEAVING THE VILLAGE

by Reg Gethin

52 years! How the time has flown. I moved to 'Byways' on 21st. December, 1968, when Whatcote Road was much narrower than it is now and the house name seemed appropriate. Previously it had been, 'The Plot.' Reg Rouse's bus to Shipston used to rush by on a Saturday, sometimes reaching nearly 20 mph.!

I took up my post as Head of Tysoe CE School on 1st. January, 1969. I was going to move onwards & upwards, but it was such an agreeable place to work and there was always so much to do, I wrapped myself up in the school, weekdays, weekends and holidays and time just moved on. Angela was very tolerant.

In early days, I taught wonderful country children from local families, whose roots had been in the district forever. I always had great parental support, Governors that other Heads could only dream of and great backing from the Warwickshire Education Authority. The PA. provided the school with funds for all the extras, and we all got stuck into various projects, such as building the heated swimming pool, so that every child should learn to swim. (Many parents also learnt to swim, at our evening swimming sessions.)

We built a smart covered area, so that the infants could work outdoors in summer. The parents were 'sleeves-rolled-up' practical as well as generous (as I'm sure they are today!). Many will also remember the adventure playground which we developed, with a real 'Warwickshire Wagon' as one of the climbing frames.

The school also made a number of five day excursions to France, Belgium & Holland - well before foreign travel became the norm. These were always taken at half term - the teachers nobly giving up their holidays. Taking responsibility for thirty-five 9, 10 & 11 year olds, 24 hours a day, on foreign soil, was all just a thing you did. Our transport was by coach, provided by Arthur Smith of 'Smiths of Tysoe'

Sadly, these days most schools have had become mini fortresses. I fondly remember the time when any parent could walk into Tysoe School, quietly sit at the back of the classroom and observe proceedings - no appointment necessary.

I have been so lucky! It was a privilege and a pleasure to work at Tysoe CE School. I intended to stay for four years - and left twenty-four years and two terms later!

Now, I'm moving onwards, to Monmouthshire. I'm trying to delay the 'upwards' as long as possible!



Reg planting daffodils in the Village Hall green.

NEW INFORMATION

BBQ PARTY

OXHILL VILLAGE HALL

Family BBQ

3rd July

To remain Covid compliant there will now be in **2 sessions**
5.30. to 7.30 p.m.
and 7.30 to 9.30 p.m.

£10 Adult, Older Children & £5
Under 5 yrs old Free

Come Join Us!

Please make sure you book your tickets with Ali Sayer
Tel **07970922352**

Or email ali.sayer@btinternet.com





THE OXHILL LAAAAADIEEES WALK AGAIN!

Over the last few years, thanks to the huge generosity of this village, the Oxhill Laaaaadieees have walked, run and cycled to raise thousands of pounds for some amazing charities.

As we come out of lockdown, two of the laaaaaadieees will be dusting off their walking boots again to tackle a marathon along the spectacular Gower Peninsula to raise money for Macmillian.

Catherine Kimmins & Katy Dowding will be joined by Catherine's sister, Sarah Finley on 10th July to stomp their way along the 26.2 miles. Macmillian is a fantastic cancer support charity that does so much for not only cancer sufferers but also for those living with cancer.



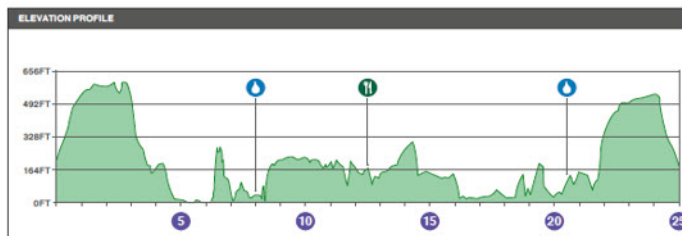
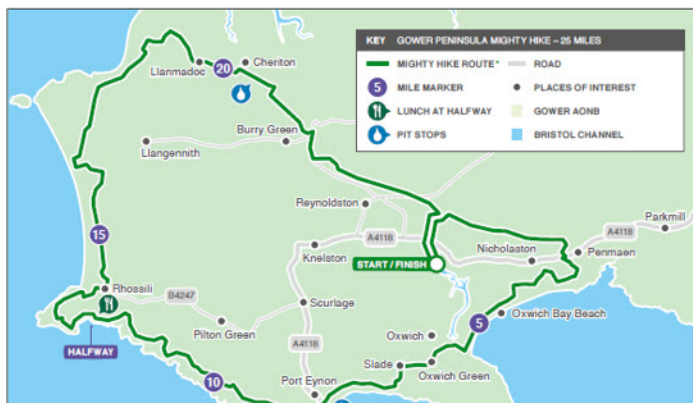
Katy Dowding & Catherine Kimmins

If you feel able to donate even a little we will be so very grateful, our Just Giving pages are below (you can use either of them) – thank you all so very much.

Catherine, Katy & Sarah x

<https://www.justgiving.com/team/oxhilllaaaaaadieees>

<https://www.justgiving.com/fundraising/katy-dowding1>





Tysoe Tennis Club
www.tysoetennisclub.co.uk

We are thrilled to welcome some much needed new members to the club this season, most of whom are already playing in matches.

Tysoe Mens teams have performed well under great difficulty. Despite a small pool of players to choose from and two unfortunate injuries, Tysoe have battled to three draws and only one loss in the last month. Particular thanks must go to Pat Crowther and David Fellows who have stepped up and played in all four of the recent matches and performed with tremendous determination for the team.

The ladies teams are in full flow having to play matches every weekend following the shortened season due to the pandemic. Both the A and B teams have played four matches each which included having to play each other with the A team coming out the winners. We are lucky enough to have our new member Lou Kramer playing for the As and proving to be a great asset to the team.

The Banbury Town mixed league, played in the evenings, has also started with mixed results and now using the 'silver deuce' format.

JUNIORS

The Red and Orange teams have continued to enjoy playing their matches and have one more game each left to play in the Summer Warwickshire League. Junior coaching on Friday afternoons continues to be well attended and 14 children took part in the Half-Term Tennis Camp.

Tennisolutions is running a Summer Camp on Wednesdays during the Summer Holiday. For more details contact Debbie at admin@tennisolutions.co.uk

For juniors and those children who would just like to have a go, the club will be running free fun sessions on the following Sundays: 25 July, 1st, 8th, 15th and 22nd August. The first session is 9-9.30 am for younger players (4-6) and 9.30-10.30 am for older ones from 7-12. Please contact nicki@tysoe.net.

Website: www.tysoetennisclub.co.uk

Club Secretary – Carol Spencer **07708 412767**

carol.spencer234@hotmail.co.uk



WARWICKSHIRE OPEN STUDIOS



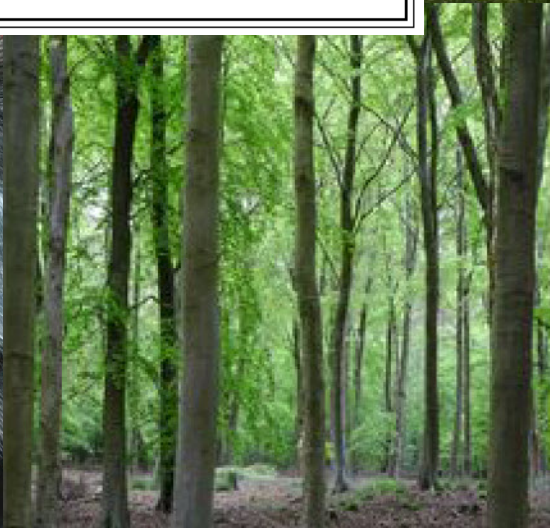
Art Exhibition

Grenville Moore – Painting
Geoffrey Smith – Photography

will be exhibiting in The Old Chapel, Oxhill
26 June – 4 July 2021
10.30-5.30 (Sun 11.00 – 4.00)

Lynsey Cleaver – Paintings

will open her studio at Binswood Cottage, Oxhill
27 – 29 June and 1 – 4 July 2021
10.00 – 2.30 (Sat/Sun 11.00 – 4.00)



ST LAWRENCE CHURCH

It is lovely that we are now back in church for our Sunday services, and we warmly welcome you to join us at any of them. Occasionally we may even have a small choir, although at the time of writing, the rest of us still have to just sit and listen. Coffee is still a pipedream – we wait and see!

For those who are unable to join us, some of our Sunday services will continue to be available on Zoom – details are usually given in the weekly Grapevine. The Wednesday Morning Worship will continue to be via Zoom – again details in the Grapevine. Contact me (see below) if you need more information.

And we are currently looking at ways in which we can extend the opening hours of our churches for private prayer, based on the current guidelines – currently we are open on Wednesdays between 12 noon - 4pm. We will let you know as soon as possible.

Sunday Services in July:

| | | |
|-------------------------------|---------|-----------------|
| Sunday, July 4 th | 9.30 am | Holy Communion |
| Sunday, July 11 th | 9.30 am | Morning Worship |
| Sunday, July 18 th | 9.30 am | Holy Communion |
| Sunday, July 25 th | 6.30 pm | Evening Worship |

Wednesdays at 10.00 am: Morning Worship via Zoom.



Slowly, then, we are re-opening, just as life is re-opening around us. May our eyes too be open to all that the God of all Faithfulness has done and in doing in our community and the world around us. As the hymn says, 'Morning by morning, new mercies I see'. May we enjoy the summer, surrounded by his mercies.

Every blessing, Jill

Rev Canon Dr. Jill Tucker
01295 680663
revjill.tucker@btinternet.com

OXHILL GARDEN CLUB



GARDEN PARTY

WEDNESDAY JULY 14TH – 5.30PM ONWARDS

Our annual garden party will resume on the above date in the Rivers Fletcher's garden at Barnacre on Whatcote Road.

Drinks and food will be served, with the first drink free of charge.

There will be:

Pimms, wine and beer

Chicken, Ham and Salmon with lots of side dishes

Strawberries and cream, or cheese and biscuits

There will be a charge of £7.50 per head to cover costs, collected on the night.

Numbers will be limited, partly because of Covid guidance, and whilst priority booking has to go to our current members list, we would also wish to encourage potential members and newcomers.

Please confirm you booking soon as you can, and pray for lovely weather.

Margaret Rivers Fletcher

0773 0800729

rfn364@btinternet.com

Martin Hunt

01295 680785



NATURE NOTES FOR JULY

by Grenville Moore

The patchwork landscape of the countryside is transformed this month as the yellows and whites fade and the crops ripen and fields turn from green to gold and the hedgerows and trees turn a darker hue of green. To me it always seems that no sooner has haymaking finished than the beginning of harvesting begins, it was once considered unlucky, or perhaps simply inconvenient, to marry at this time; ‘They that wive ‘twixt sickle and scythe shall never thrive’

This last month we enjoyed the most amazing show of blossom, buttercups and Cow Parsley (*Anthriscus sylvestris*) with its froth of white blooms shining out along many of the verges and alongside hedgerows, billowing out into the fields much reaching well over six foot in height. The old Warwickshire name was Kex, other unusual colloquial names are Badman’s oatmeal, Rabbit meat, Mummy die, Mother die, Grandpa’s pepper, Blackman’s tobacco and the more common name of Queen Anne’s lace (I noticed on FB Fiona Franklin mentioned that her granny used that name).

‘The storey is that Queen Anne, who suffered from asthma, used to come out into the countryside around Kensington, then open meadow and farmland, to get fresh air. As she and her ladies walked along the lanes in spring sunshine, they carried their lace pillows and made lace. The flowering cow parsley, with its



Cow Parsley

beautiful lacy flowers, resembled the court ladies' lace patterns, so the country folk started calling it Queen Anne's Lace, and this name is still used in many areas of the country today.'

Perhaps the other most frequent name is 'kex' which my farther in law always called it along with other umbellifers such as hogweed and hemlock. The other name Mother die implied that if you picked any of these plants your Mother would die, thinking about it i would suggest that probably your mother would tell you that if you picked any of these plants, especially hemlock which is highly poisonous, you would die, hence mother and die! I remember quite a few years ago reading of two boys who had

picked hemlock and made pea-shooters out of the stalks and one had died.

Beware July is the month of thunder and lightning. Epitaph on an Oxfordshire gravestone 1718:

"John Hewett and Margaret Drew, an industrious young man and virtuous Maiden of this Parish, Contacted in Marriage; who being at Harvest Who were in one Instant killed by Lightning, the last day of July."

Or put another way; Here lye two poor Lovers, who had the mishap Tho' very chaste people to die of a Clap.



Cow parsley bordering a lane.

OXHILL COOKS

Inspiration for this month's recipe comes from having just returned from a lovely holiday in Aberdyfi. Bara brith translates as speckled bread and apparently was invented by a chef who added dried fruit and spices to a bread dough, creating the first version of the traditional Welsh tea loaf. This recipe couldn't be simpler and gives a very moist and fruity loaf that doesn't crumble when cut. Don't forget to soak the fruit in the tea and sugar for at least a couple of hours before you start baking! Using different teas will produce subtly different loaves.



BARA BRITH

6 oz currants and 6 oz sultanas (or 12 oz mixed fruit, which is what I use)
8 oz dark soft brown sugar
½ pint hot tea
10 oz self raising flour
1 egg

Makes 2 x 1lb loaves, or a 2lb loaf

1. Put the fruit and brown sugar in a heatproof bowl and pour the tea over. Stir well, cover and leave to soak overnight, or for at least a couple of hours.
2. Grease and line 2 x 1lb loaf tins, or 1 x 2lb loaf tin. Turn oven to 170 C, non fan, 160 C fan

3. Stir the flour and egg into the fruit mixture, mix thoroughly and put into tin/s.
4. Place in the preheated oven and bake for 1 hour. Test that the cake is cooked by inserting a skewer into the centre of the cake. If it comes out clean, the cake is cooked.
5. Turn out the cake and leave to cool on a rack.



Holiday photos taken in Wales by Ruth Mercer

SWAN SINGERS

Now into our 8th year the choir meets on Tuesday evenings, 7.30-9.15pm at Kineton Methodist Church Hall and features sopranos, altos, tenors and basses, singing a complete range of music from modern to traditional to classic. No auditions are held and no experience is necessary though is always helpful. Mostly, enthusiasm and a willingness to try new things are all that's required. Many of the choir do have previous singing experience and are happy to help those who are new to it.



Over the 7 years since it was formed, the choir has performed at many concerts and charity events. The health benefits of singing in a group are well proven giving a huge sense of achievement and belonging, to a team who all inter-depend on each other to produce songs in four-part harmony. Many new friendships have been formed and great fun is all part of the evening.

Do come and join us: details from Gill on **07852 970049**, or email **admin@swansingers.uk** or browse on **www.swansingers.uk**

The Way We Were



FERN COTTAGE 1881 - 1906

Further to the item in April's Oxhill News on the sad death of Henry Allitt in 1881, Julian Spaul has kindly provided me with this photo of the old Fern Cottage with Henry's widow, Harriet, on the doorstep, having moved here after her husband's death. The date must be sometime between 1881 and 1906 when Harriet also died. "Southview" can be seen in the background.

BARKING DOG

As the weather picks up, many Oxhill residents like to sleep with the windows ajar. Last night we were woken up by persistent dog barking which went on for nearly half an hour, triggering other dogs around the village. This isn't the first time this has happened, we had to endure several nights of disturbed sleep last summer. It is upsetting that a pet owner would ignore the cries of their family pet.

Anonymous

The Way We Were



Fern Cottage today

Babysitter Available!

I'm available from the 17th May
and through the summer
holidays.

I live in Oxhill so I am local, please
email me if you're interested!

freyaod5@gmail.com

Freya O'Donnell, age 15

TWAM TOOLS WITH A MISSION

We are starting up, after difficult year, and if you would like to support our Christian charity TWAM we collect all types of tools, sewing machines, computers etc. and refurbish them and put them into “Trade Kits” e.g. Taylor, Carpenter, Car Mechanic and many more. We ship them out mainly to Africa and run with our partners a six-month training courses for deserving individuals to be trained. On completion they receive their trade kit and return to their village/town and start their self-employed business. More details at www.twam.uk .

If you have unwanted tools, please contact me on **07748 324934**.

Jim Saxton – TWAM tool collector based in Oxhill.



Villager Michael Boulton's lovely naturally wild garden. ~ photo by Pat Crowther



Carers4Carers

Finding support through supporting each other

Carers4Carers, a self-help support group for unpaid carers living in Kinton, its surrounding villages and rural areas, are planning to return to Kinton Village Hall in September!! Weather permitting, we will have already had our first outdoor meeting at Compton Verney in June and another planned for August. In the meantime, we continue to hold a monthly virtual coffee morning on the 4th Friday of each month, support our members by phone and send out a monthly newsletter. Membership is free.

For more information about our group and upcoming meetings, please take a look at our website **www.carers4carersonthefosse.org.uk**
email us at **kcarers4carers@gmail.com**
or phone Gillian on **07947 893504**

Best wishes

Lisa Barnett – Assistant Coordinator

Carers4Carers

TYSOE W.I.

We are really hoping to be able to meet up very soon, it's been such a long time since we were all together. Fingers crossed!

Our craft and laugh group have been busy again decorating Tysoe Tearooms windows.

All our members received their meeting in a bag this month containing a lovely hand crafted needle case made by member Gill Hood, no mean feat as we total 51 ladies!

Email **tysoew.i.1917@icloud.com**

Follow us on Facebook or **www.tysoewi.com**

theWI
INSPIRING WOMEN





WOT2GROW COMMUNITY ORCHARD

Well, it certainly rained a lot in May!! Everywhere needed the rain and the trees and soft fruit definitely appreciated all the watering and are now enjoying the June summer temperatures. The pears were the main sufferers from the

April frosts with a lot of blackened shoots and flower buds but they have put on a good show of small pears to date and we should get a reasonable crop. The apples however are laden with small fruit and as the summer prune progresses it is helping with the traditional “June Drop” where the fruitlets are thinned out to allow bigger and better crops from the remaining ones.



Green Orb Spider



Jefferson Greengage

The weather and not mowing in May allowed the dandelions and cow parsley to proliferate and set seed!! Along with all the other weeds like nettles and thistles they have really grown in the damp and warm weather. The wildflower strips have been amazing and with the hedgerows and margins have more than fulfilled their mission to feed all the wild life in Tysoe!

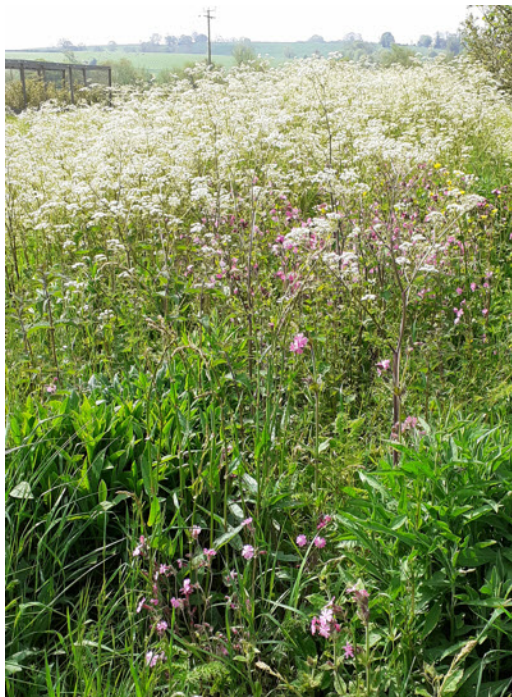
The members have continued to maintain the soft fruit and helping with the pruning along side the mowing and strimming but there is always lots to do so any help is very gratefully received. Just get in touch with one of us – details below.

The Community Orchard is just behind the allotments on the Shenington Road in Tysoe.

Liz Atkinson (680045), Paul Sayer (680451), Sue and Mike Sanderson (688080)
website **www.wot2grow.co.uk**



Buttercup and Campion



Wildflower Strip

OXHILL COMMUNITY WEBSITE

Here is a reminder of the new Oxhill Community website, in case you wish to find out what is going on in the village, look at old issues of the Oxhill News, find out about our village history or discover new clubs, groups or local attractions to visit.

See more at **oxhillcommunity.co.uk**

Colour by Numbers



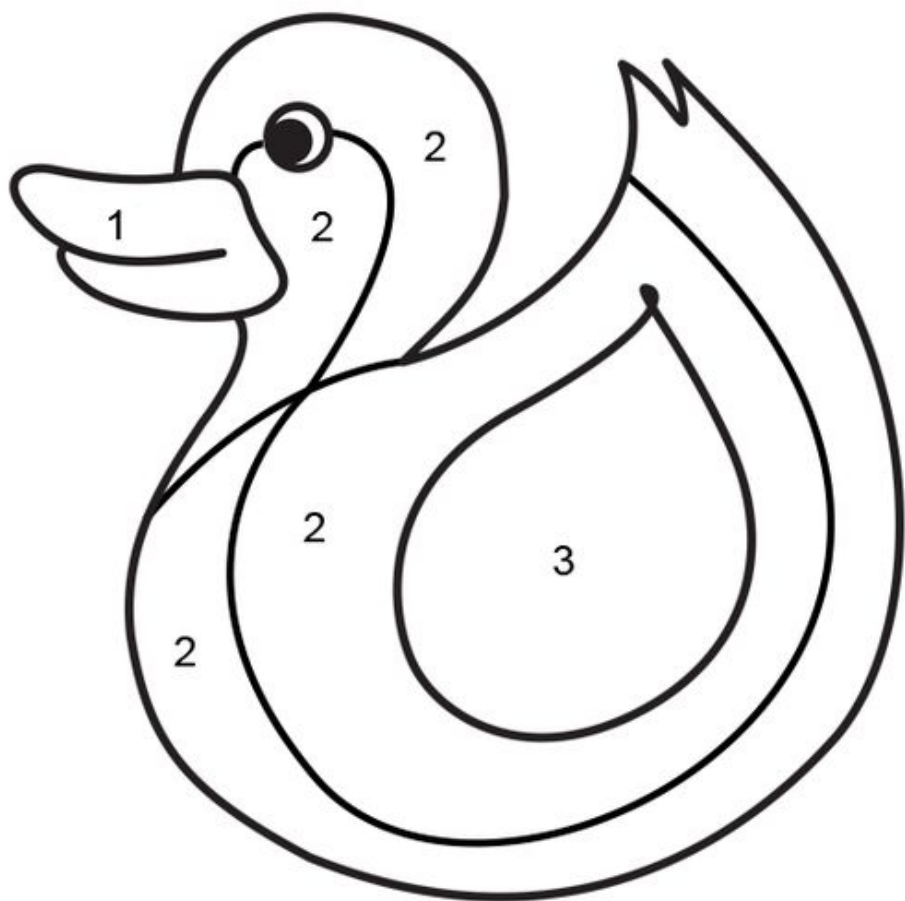
1



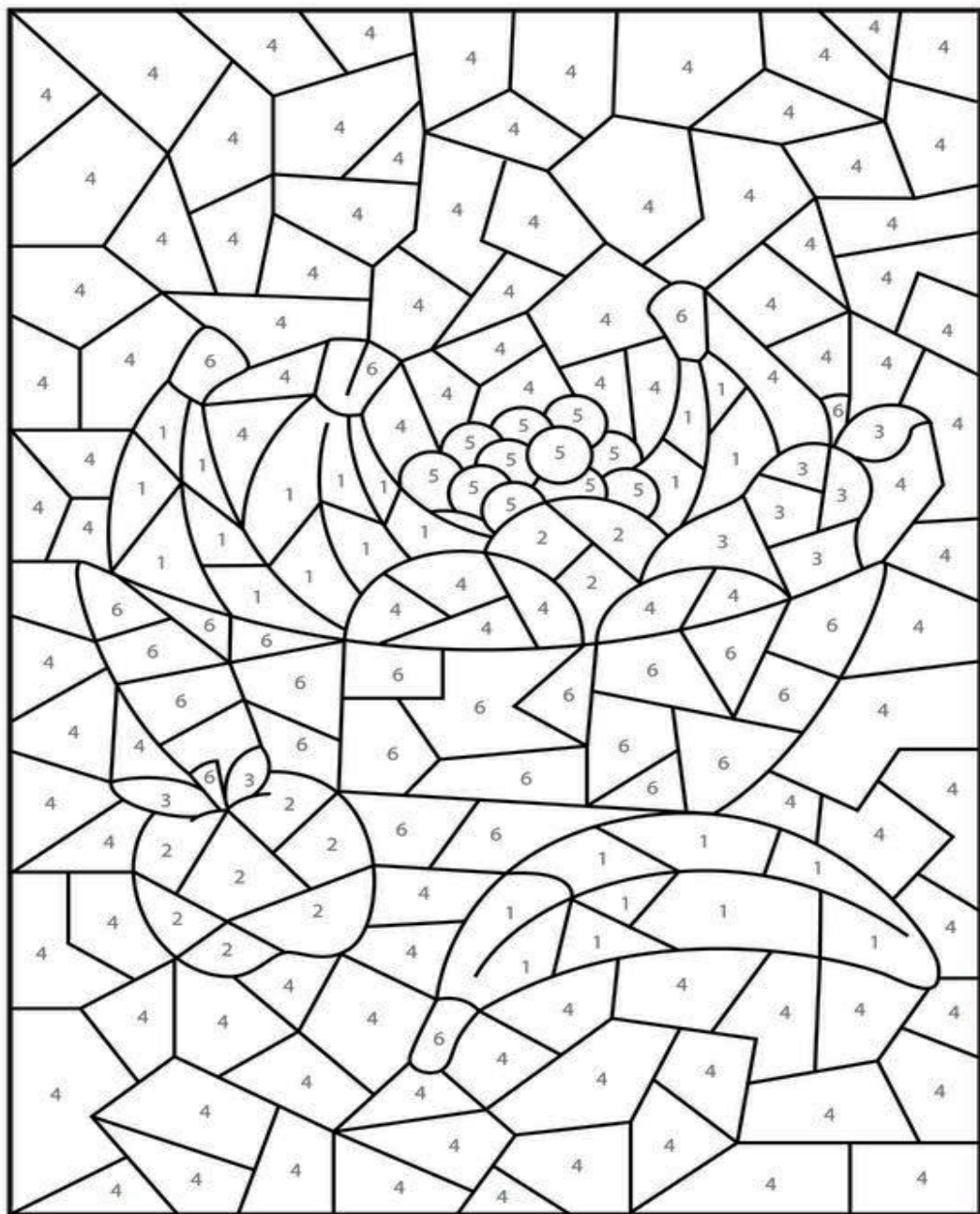
2



3



Colour by Numbers



1. Yellow 2. Red 3. Green 4. Orange 5. Purple 6. Brown

WHAT'S ON IN & AROUND OXHILL

JULY

| | | |
|------------------------|---------------|--|
| Thurs 1st | 14:00 - 14:30 | Mobile Library, outside Village Hall |
| Sat 3rd | 17:30 +19:30 | BBQ Party, Village Hall |
| June 26 - July 4 | 10:30 - 17:30 | Warwickshire Art Exhibit, the Old Chapel |
| June 27 - 29, July 1-4 | | Warwickshire Art Exhibit, Binswood Cottage |
| Tues 13th | 19:30 | PC Meeting Village Hall |
| Wed 14th | 17:30 | Oxhill Garden Club Party |
| Thurs 22nd | 14:00 - 14:30 | Mobile Library, outside Village Hall |
| Every Thursday | 11:45ish | Awesome Coffee Van, outside Peacock Pub |

PC MEETINGS

The next PC Meeting will be held in the Village Hall starting at 7.30pm on Tuesday 13 July, the Agenda will be shown on the PC website and a copy will be posted on the Notice board next to the Peacock a few days beforehand.

CONTRIBUTIONS TO THE OXHILL NEWS

The editors welcome any pictures, photographs, drawings, poems, puzzles, recipes, announcements or items of local news for possible inclusion in The Oxhill News. Submissions must be received by the 15th of each month for publication in the following month.

Please email: oxhill@btinternet.com

BIN COLLECTION CALENDAR



Check the date on the calendar to identify which bins go out for collection.



| July | | | | | | |
|------|----|----|----|----|----|----|
| M | Tu | W | Th | F | Sa | Su |
| | | | 1 | 2 | 3 | 4 |
| 5 | 6 | 7 | 8 | 9 | 10 | 11 |
| 12 | 13 | 14 | 15 | 16 | 17 | 18 |
| 19 | 20 | 21 | 22 | 23 | 24 | 25 |
| 26 | 27 | 28 | 29 | 30 | 31 | |